



# I-GRIP PTFE CLOTH

SUPERIOR QUALITY FOR  
CRITICAL APPLICATIONS

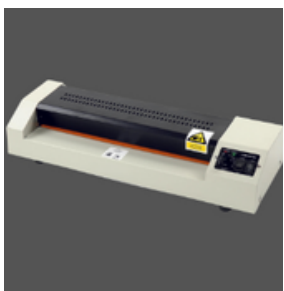


## FEATURE

- » High-Temperature Resistance
- » Non-stick Surface Superior
- » Chemical Resistance
- » Low Friction
- » Durability



## APPLICATION AREA



Laminators



Packaging  
Machines



Heat Sealers



ISO Certified  
Company

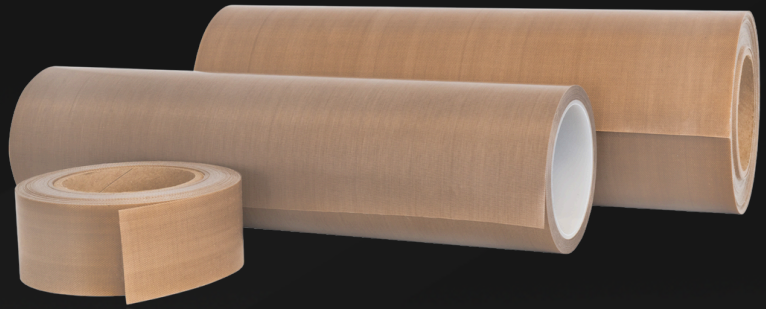
+91 9834161900  
+91 8779837559





## DESCRIPTION

PTFE (Polytetrafluoroethylene) cloth laminated with fiberglass combines the non-stick and high-temperature resistant properties of PTFE with the strength and durability of fiberglass. This composite material is highly versatile and used in various industrial applications.



## APPLICATION

- **Non-stick Surface:** PTFE provides a slick surface, preventing materials from adhering to it.
- **High-Temperature Resistance:** Can withstand continuous temperatures up to 260°C (500°F) and short bursts up to 300°C (572°F).
- **Chemical Resistance:** Resistant to most chemicals and solvents.
- **Low Friction:** Offers a low coefficient of friction, making it ideal for applications where smooth movement is crucial.
- **Durability:** The fiberglass reinforcement adds mechanical strength and dimensional stability.

## BENEFITS

- **Enhanced Longevity:** Fiberglass reinforcement extends the lifespan of the PTFE cloth, reducing wear and tear.
- **Efficiency:** The non-stick surface ensures smooth operation and easy cleaning, improving overall efficiency.
- **Safety:** High resistance to heat and chemicals enhances safety in high-temperature and harsh chemical environments.



Website



Catalogue

+91 9834161900  
+91 8779837559

